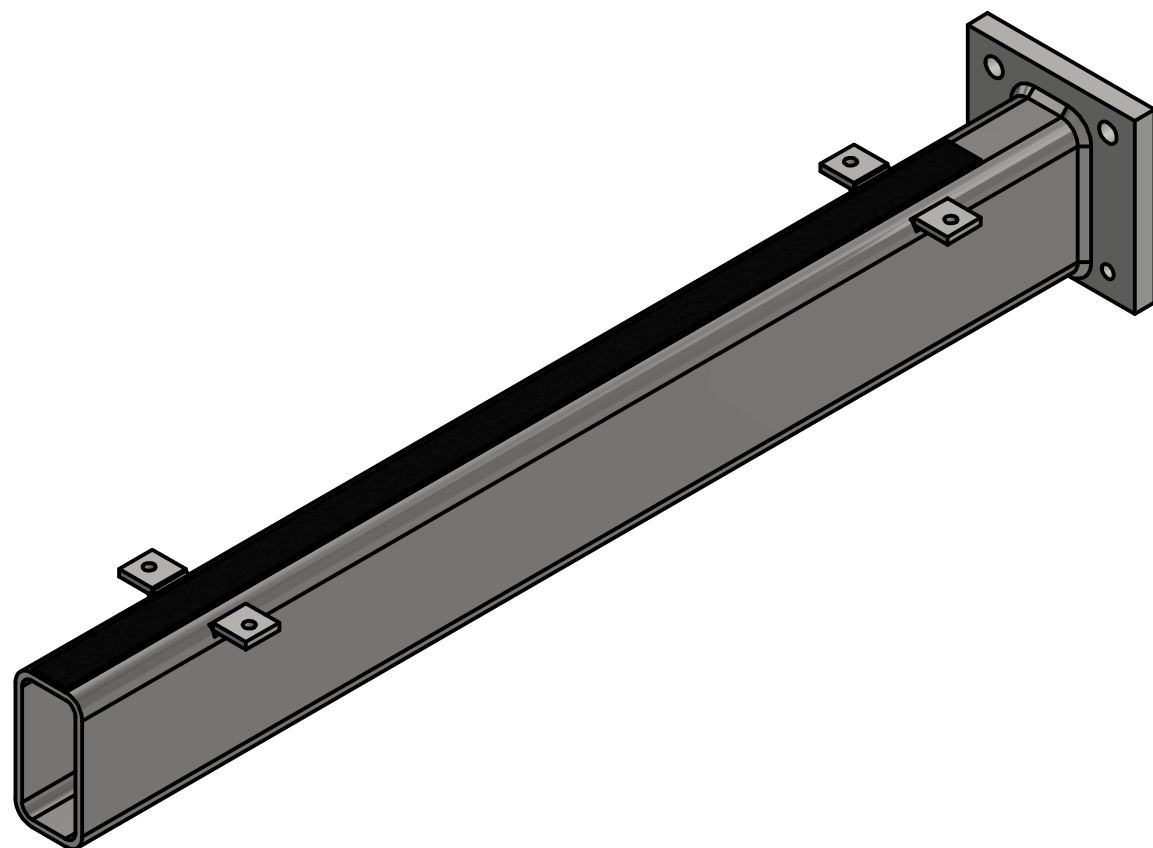
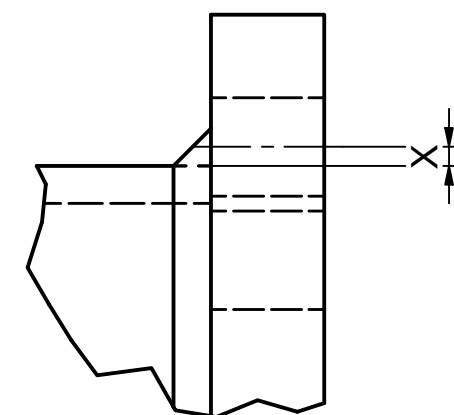


B (1 : 2)



Pos. 3 HUP =

L =

Gummishims L = (lengde på HUP - 130 mm)

Senter hull ned til HUP = X :

Gummi tykkelse = 5 mm

Fall Y =

Sveis a =

Ordrenr =

Drawn by	Controlled by	Revision no.	Revision date	Date	Doc.no.
				19.06.2020	K5-03-37



BWC 40 U-L

Drawing no.	Level	Sheet
		1 / 5